

BASIS OF BEARINGS

BEARINGS ARE BASED ON THE GEODETIC MERIDIAN THROUGH CORNER 1 OF LOT 59, T.55N., R.97W.

CERTIFICATE OF SURVEYOR

STATE OF WYOMING)
COUNTY OF PARK) SS.
I, LYLE J. CASCIATO, OF ENGINEERING ASSOCIATES IN CODY, WYOMING, HEREBY CERTIFY THAT THIS MAP WAS PREPARED USING DOCUMENTS ON FILE IN THE BIG HORN COUNTY CLERK'S OFFICE, AND FROM NOTES TAKEN DURING AN ACTUAL SURVEY PERFORMED BY ME AND OTHERS UNDER MY DIRECTION BETWEEN JUNE OF 2022 AND JUNE OF 2023; AND THAT TO MY KNOWLEDGE, THIS MAP SHOWS THE SITUATION ON THE GROUND AT THE TIME OF ITS PREPARATION.



ALTERATION OF THIS MAP OTHER THAN BY THE ABOVE PROFESSIONAL LAND SURVEYOR OR AS OTHERWISE ALLOWED BY LAW MAY AFFECT LIABILITY FOR THE ACCURACY OF SAID MAP.

RECORD OF SURVEY

- For -

SHOSHONE MEADOWS PROPERTIES, LLC

- Located In -

LOTS 58-A AND 64-A,
RESURVEY T.56N., R.97W.,
AND LOTS 64-C, 64-D, 64-E AND
64-F,
RESURVEY T.55N., R.97W., 6TH P.M.,
BIG HORN COUNTY, WYOMING

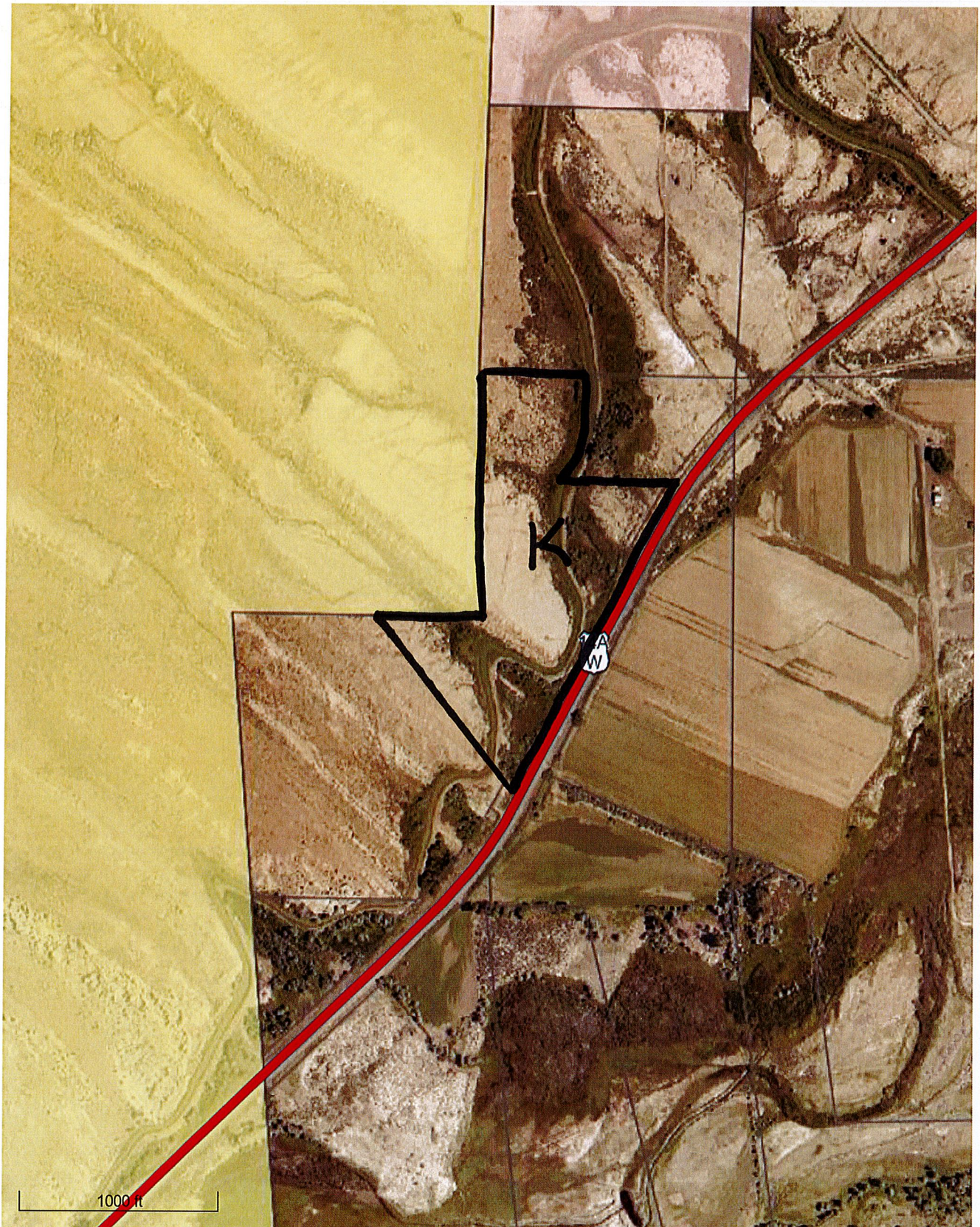
- Prepared By -

ENGINEERING ASSOCIATES, CODY, WYOMING
CONSULTING ENGINEERS & SURVEYORS



JULY 7, 2023
JOB # 22000.71
RMN

Big Horn County Wyoming MapServer



Boundary Lines are Approximate

Big Horn County Wyoming MapServer

