

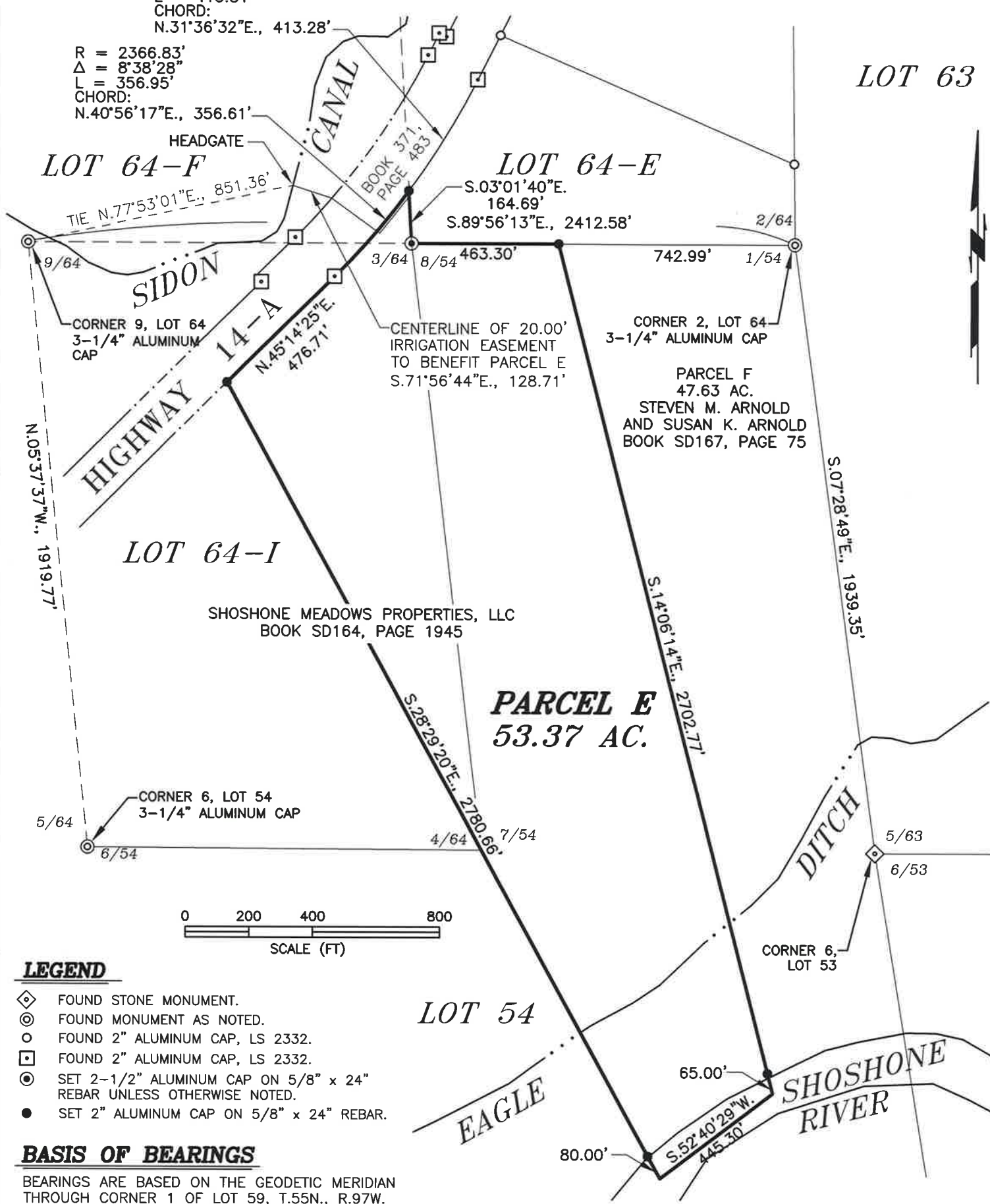
R = 2366.83'
 Δ = 10°01'02"
 L = 413.81'
 CHORD:
 N.31°36'32"E., 413.28'

T.55N., R.97W.

EXHIBIT B

R = 2366.83'
 Δ = 8°38'28"
 L = 356.95'
 CHORD:
 N.40°56'17"E., 356.61'

LOT 63



LEGEND

- ◆ FOUND STONE MONUMENT.
- ⊙ FOUND MONUMENT AS NOTED.
- FOUND 2" ALUMINUM CAP, LS 2332.
- ◻ FOUND 2" ALUMINUM CAP, LS 2332.
- ⊙ SET 2-1/2" ALUMINUM CAP ON 5/8" x 24" REBAR UNLESS OTHERWISE NOTED.
- SET 2" ALUMINUM CAP ON 5/8" x 24" REBAR.

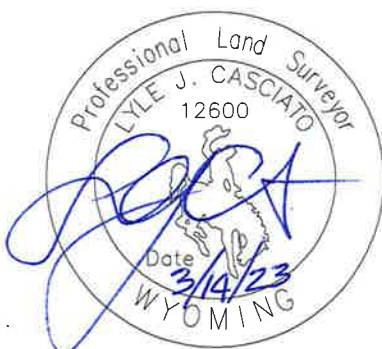
BASIS OF BEARINGS

BEARINGS ARE BASED ON THE GEODETIC MERIDIAN THROUGH CORNER 1 OF LOT 59, T.55N., R.97W.

CERTIFICATE OF SURVEYOR

STATE OF WYOMING)
 COUNTY OF PARK) SS.

I, LYLE J. CASCIATO, OF ENGINEERING ASSOCIATES IN CODY, WYOMING, HEREBY CERTIFY THAT THIS MAP WAS PREPARED USING DOCUMENTS ON FILE IN THE BIG HORN COUNTY AND PARK COUNTY CLERK'S OFFICES, AND FROM NOTES TAKEN DURING AN ACTUAL SURVEY PERFORMED BY ME AND OTHERS UNDER MY DIRECTION BETWEEN JUNE AND AUGUST OF 2022; AND THAT TO MY KNOWLEDGE, THIS MAP SHOWS THE SITUATION ON THE GROUND AT THE TIME OF ITS PREPARATION.



ALTERATION OF THIS MAP OTHER THAN BY THE ABOVE PROFESSIONAL LAND SURVEYOR OR AS OTHERWISE ALLOWED BY LAW MAY AFFECT LIABILITY FOR THE ACCURACY OF SAID MAP.

RECORD OF SURVEY
 OF PARCEL E

- For -

SHOSHONE MEADOWS PROPERTIES, LLC

- Located In -

LOT 54, LOT 64-F AND LOT 64-I,
 RESURVEY T.55N., R.97W., 6TH P.M.,
 BIG HORN COUNTY, WYOMING

- Prepared By -

ENGINEERING ASSOCIATES, CODY, WYOMING
 CONSULTING ENGINEERS & SURVEYORS



MARCH 14, 2023
 JOB NO. 22000.71
 RMN

SHEET 1 OF 1