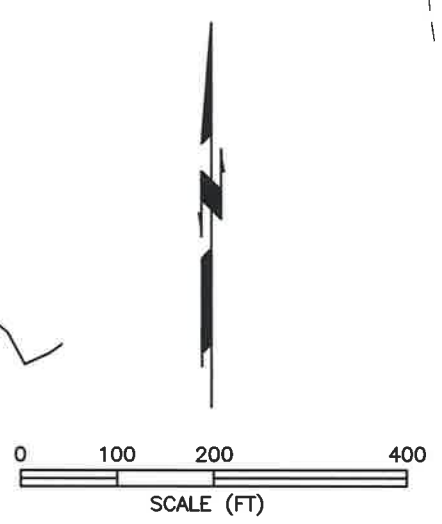
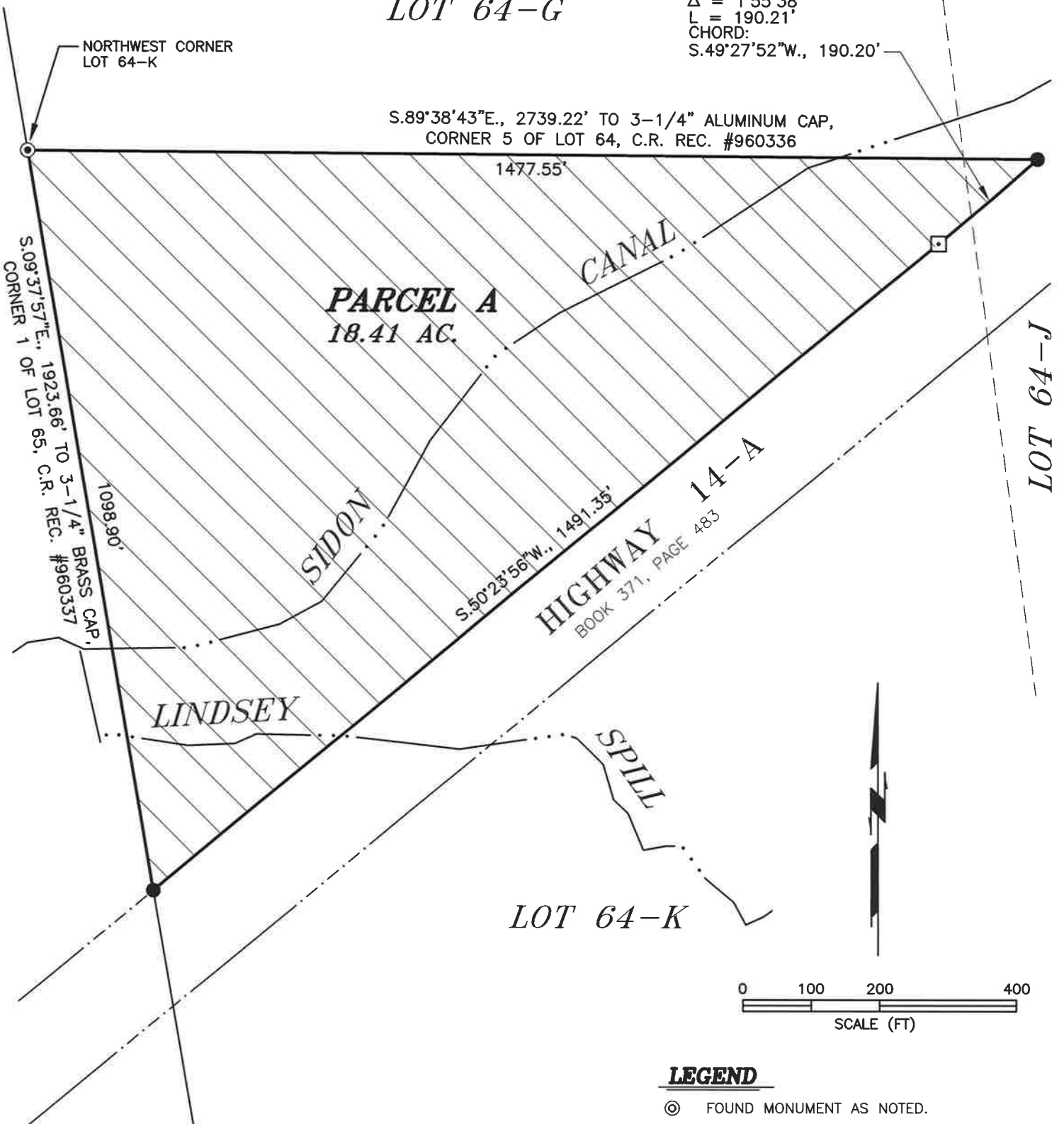


LOT 64-G

R = 5654.58'
Δ = 1'55'38"
L = 190.21'
CHORD:
S.49°27'52"W., 190.20'



BASIS OF BEARINGS

BEARINGS ARE BASED ON THE GEODETIC MERIDIAN THROUGH CORNER 1 OF LOT 59, T.55N., R.97W.

CERTIFICATE OF SURVEYOR

STATE OF WYOMING }
COUNTY OF PARK } SS.

I, LYLE J. CASCIATO, OF ENGINEERING ASSOCIATES IN CODY, WYOMING, HEREBY CERTIFY THAT THIS MAP WAS PREPARED USING DOCUMENTS ON FILE IN THE BIG HORN COUNTY CLERK'S OFFICE, AND FROM NOTES TAKEN DURING AN ACTUAL SURVEY PERFORMED BY ME AND OTHERS UNDER MY DIRECTION BETWEEN JUNE OF 2022 AND JUNE OF 2023; AND THAT TO MY KNOWLEDGE, THIS MAP SHOWS THE SITUATION ON THE GROUND AT THE TIME OF ITS PREPARATION.



ALTERATION OF THIS MAP OTHER THAN BY THE ABOVE PROFESSIONAL LAND SURVEYOR OR AS OTHERWISE ALLOWED BY LAW MAY AFFECT LIABILITY FOR THE ACCURACY OF SAID MAP.

LEGEND

- ⊙ FOUND MONUMENT AS NOTED.
- ⊠ FOUND HIGHWAY RIGHT-OF-WAY MONUMENT.
- ⊙ SET 2-1/2" ALUMINUM CAP ON 5/8" x 24" REBAR UNLESS OTHERWISE NOTED.
- SET 2" ALUMINUM CAP ON 5/8" x 24" REBAR.

RECORD OF SURVEY

- For -

SHOSHONE MEADOWS PROPERTIES, LLC

- Located In -

LOT 64-J AND LOT 64-K,
RESURVEY T.55N., R.97W., 6TH P.M.,
BIG HORN COUNTY, WYOMING

- Prepared By -

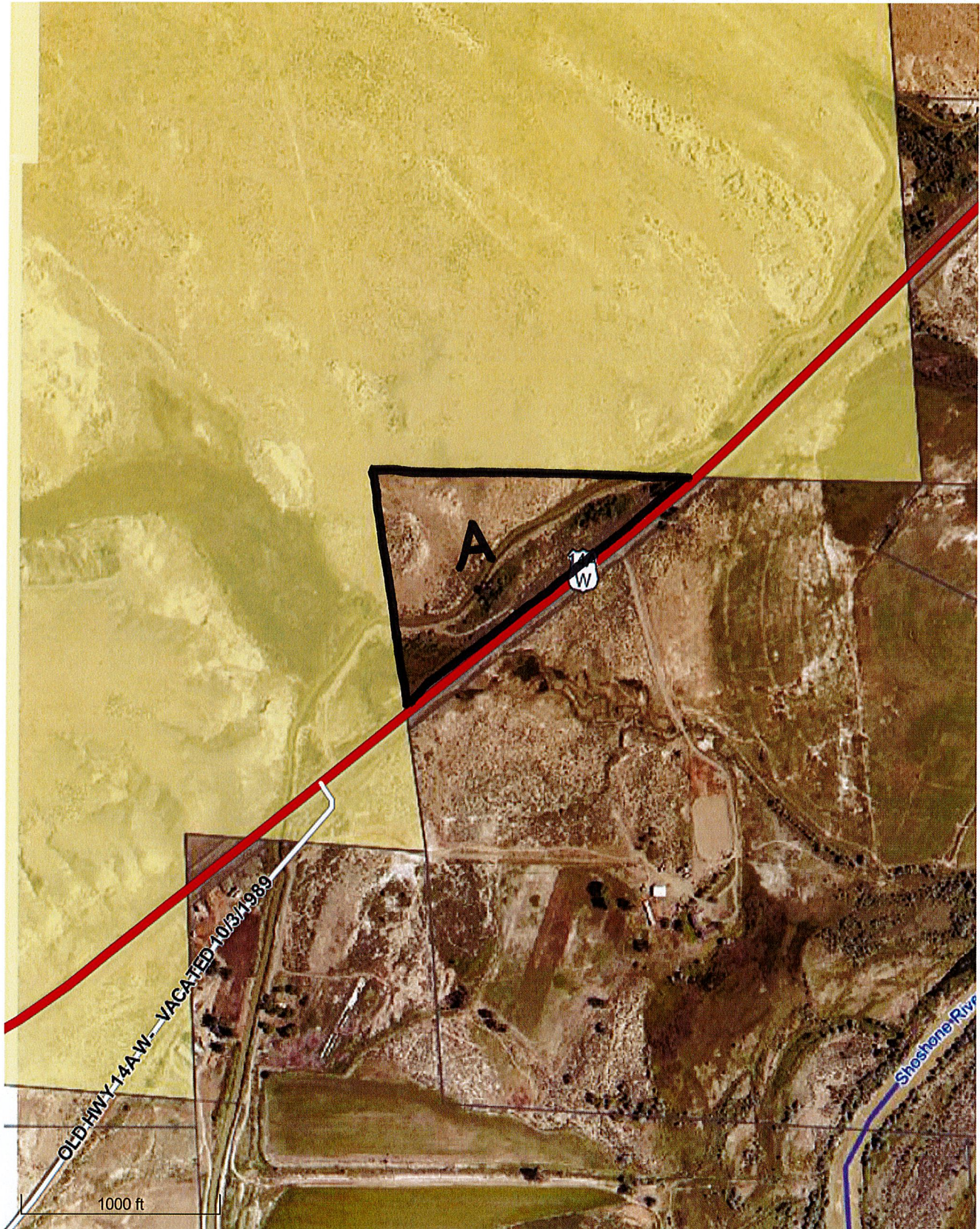
ENGINEERING ASSOCIATES, CODY, WYOMING
CONSULTING ENGINEERS & SURVEYORS



SEPTEMBER 5, 2023
JOB # 22000.71
RMN

SHEET 1 OF 1

Big Horn County Wyoming MapServer



Boundary Lines are Approximate

Big Horn County Wyoming MapServer

