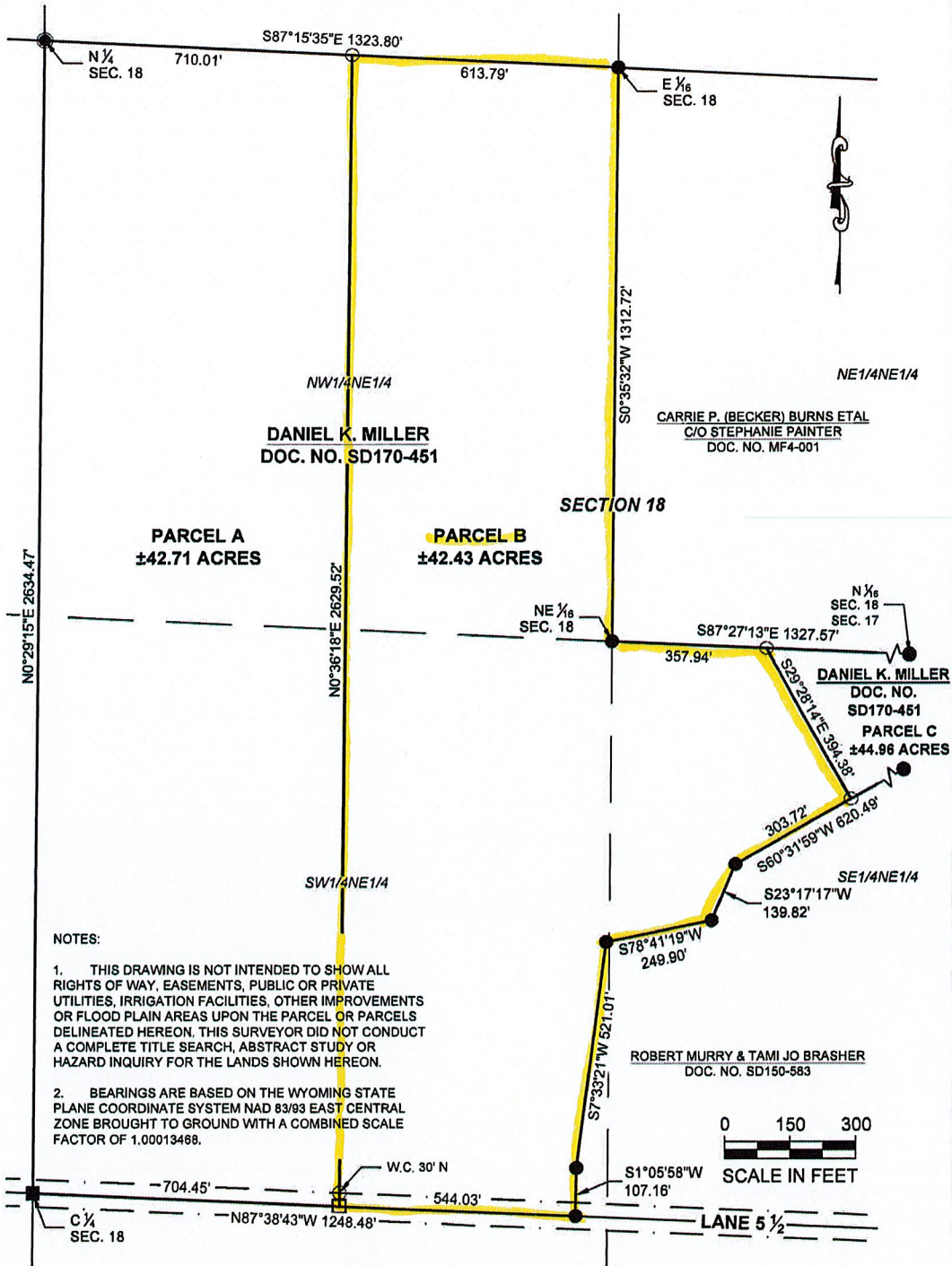


T. 57 N., R. 97 W. 6TH P.M.



LEGEND

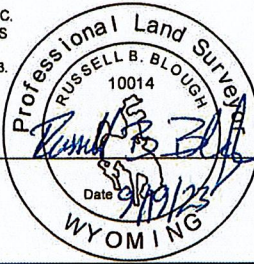
- — 3/8" REBAR WITH 2 1/2" AL. CAP SET
- — CALCULATED POSITION
- — REBAR & ALUM. CAP FOUND
- ⊙ — BRASS CAP FOUND
- — REBAR FOUND

CERTIFICATE OF SURVEYOR

STATE OF WYOMING } ss
 COUNTY OF PARK

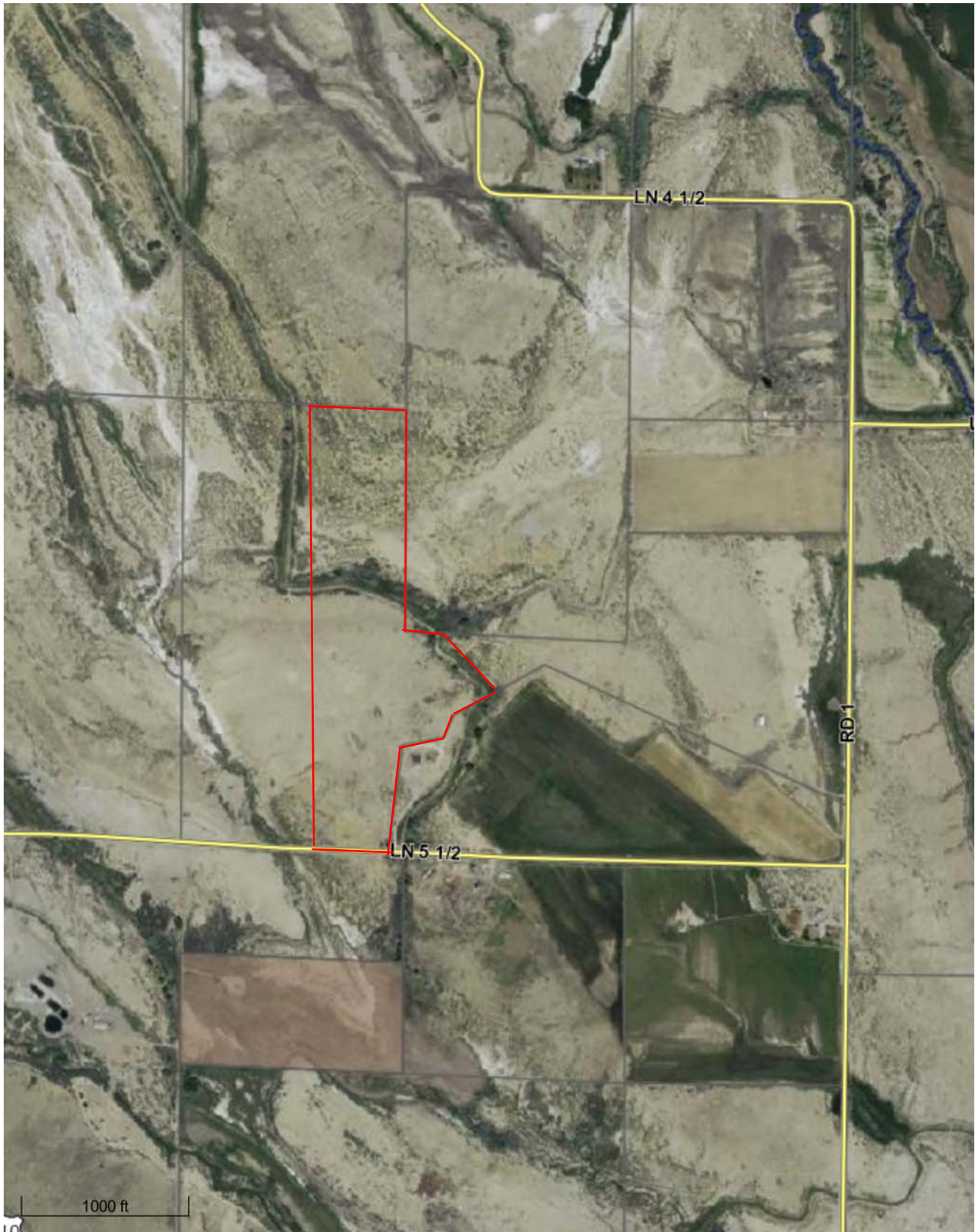
I, RUSSELL B. BLOUGH ON BEHALF OF MORRISON-MAIERLE, INC. OF CODY, WYOMING DO HEREBY CERTIFY THAT THIS MAP WAS PREPARED FROM FIELD NOTES TAKEN DURING AN ACTUAL SURVEY MADE UNDER MY DIRECTION ON SEPTEMBER 12, 2023. THAT THIS MAP CORRECTLY SHOWS THE RESULTS OF SAID SURVEY AND THAT THE MONUMENTS FOUND OR SET ARE AS SHOWN TO THE BEST OF MY KNOWLEDGE AND BELIEF.

WYOMING L.S. REGISTRATION NO. 10014
 MORRISON MAIERLE
 BY: RUSSELL B. BLOUGH (AGENT)



<p>engineers • surveyors • planners • scientists</p> <p>1402 Stampede Ave Cody, Wyoming 82414 Phone: 307.587.6281 www.m-m.net COPYRIGHT © MORRISON-MAIERLE, INC. 2023</p>	DRAWN BY: KGM FLD WK. BY: KGM CHK. BY: RBB DATE: 09/2023	DAN MILLER DEAVER WYOMING	PROJECT NO. 10473.001 SHEET NUMBER 1 OF 2
	RECORD OF SURVEY WITHIN S1/2NE1/4 SEC. 18 & SW1/4NW1/4 SEC. 17 T. 57 N., R. 97 W., 6TH P.M. BIG HORN COUNTY, WYOMING		

Big Horn County Wyoming MapServer



Boundary Lines are Approximate