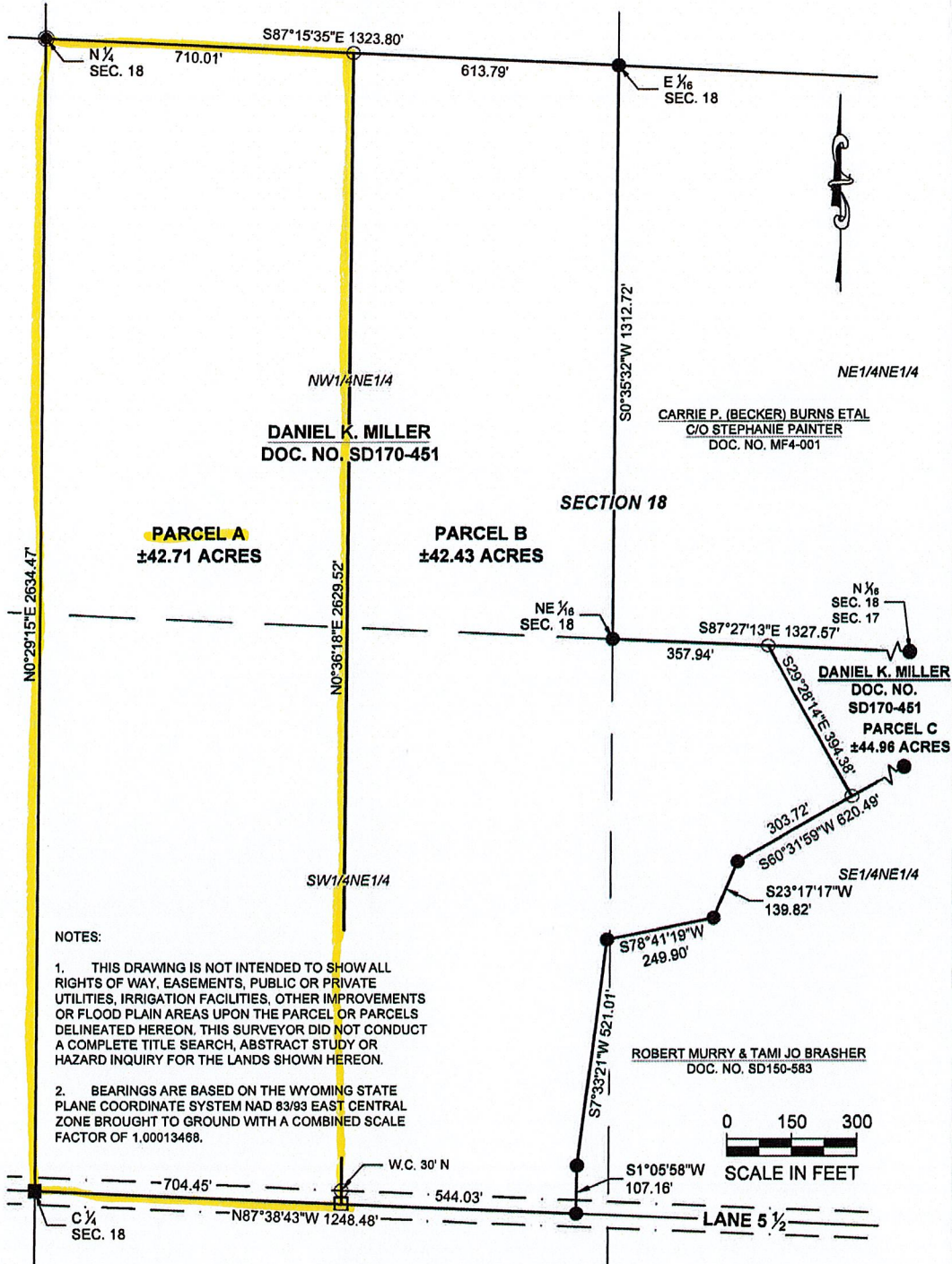


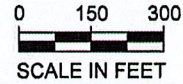
T. 57 N., R. 97 W. 6TH P.M.



NOTES:

1. THIS DRAWING IS NOT INTENDED TO SHOW ALL RIGHTS OF WAY, EASEMENTS, PUBLIC OR PRIVATE UTILITIES, IRRIGATION FACILITIES, OTHER IMPROVEMENTS OR FLOOD PLAIN AREAS UPON THE PARCEL OR PARCELS DELINEATED HEREON. THIS SURVEYOR DID NOT CONDUCT A COMPLETE TITLE SEARCH, ABSTRACT STUDY OR HAZARD INQUIRY FOR THE LANDS SHOWN HEREON.

2. BEARINGS ARE BASED ON THE WYOMING STATE PLANE COORDINATE SYSTEM NAD 83/93 EAST CENTRAL ZONE BROUGHT TO GROUND WITH A COMBINED SCALE FACTOR OF 1.00013468.



LEGEND

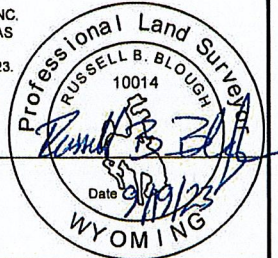
- ——— 3/8" REBAR WITH 2 1/2" AL. CAP SET
- ——— CALCULATED POSITION
- ——— REBAR & ALUM. CAP FOUND
- ⊙ ——— BRASS CAP FOUND
- ——— REBAR FOUND

CERTIFICATE OF SURVEYOR

STATE OF WYOMING } ss
COUNTY OF PARK

I, RUSSELL B. BLOUGH ON BEHALF OF MORRISON-MAIERLE, INC. OF CODY, WYOMING DO HEREBY CERTIFY THAT THIS MAP WAS PREPARED FROM FIELD NOTES TAKEN DURING AN ACTUAL SURVEY MADE UNDER MY DIRECTION ON SEPTEMBER 12, 2023. THAT THIS MAP CORRECTLY SHOWS THE RESULTS OF SAID SURVEY AND THAT THE MONUMENTS FOUND OR SET ARE AS SHOWN TO THE BEST OF MY KNOWLEDGE AND BELIEF.

WYOMING L.S. REGISTRATION NO. 10014
MORRISON MAIERLE
BY: RUSSELL B. BLOUGH (AGENT)



Morrison Maierle
engineers • surveyors • planners • scientists

1402 Stampede Ave
Cody, Wyoming 82414
Phone: 307.587.6281
www.m-m.net

DRAWN BY: KGM
FLD WK BY: KGM
CHK BY: RBB
DATE: 09/2023

DAN MILLER
DEAVER WYOMING
RECORD OF SURVEY
WITHIN S1/2NE1/4 SEC. 18 & SW1/4NW1/4 SEC. 17
T. 57 N., R. 97 W., 6TH P.M. BIG HORN COUNTY, WYOMING

PROJECT NO.
10473.001
SHEET NUMBER
1 OF 2

Big Horn County Wyoming MapServer



Boundary Lines are Approximate