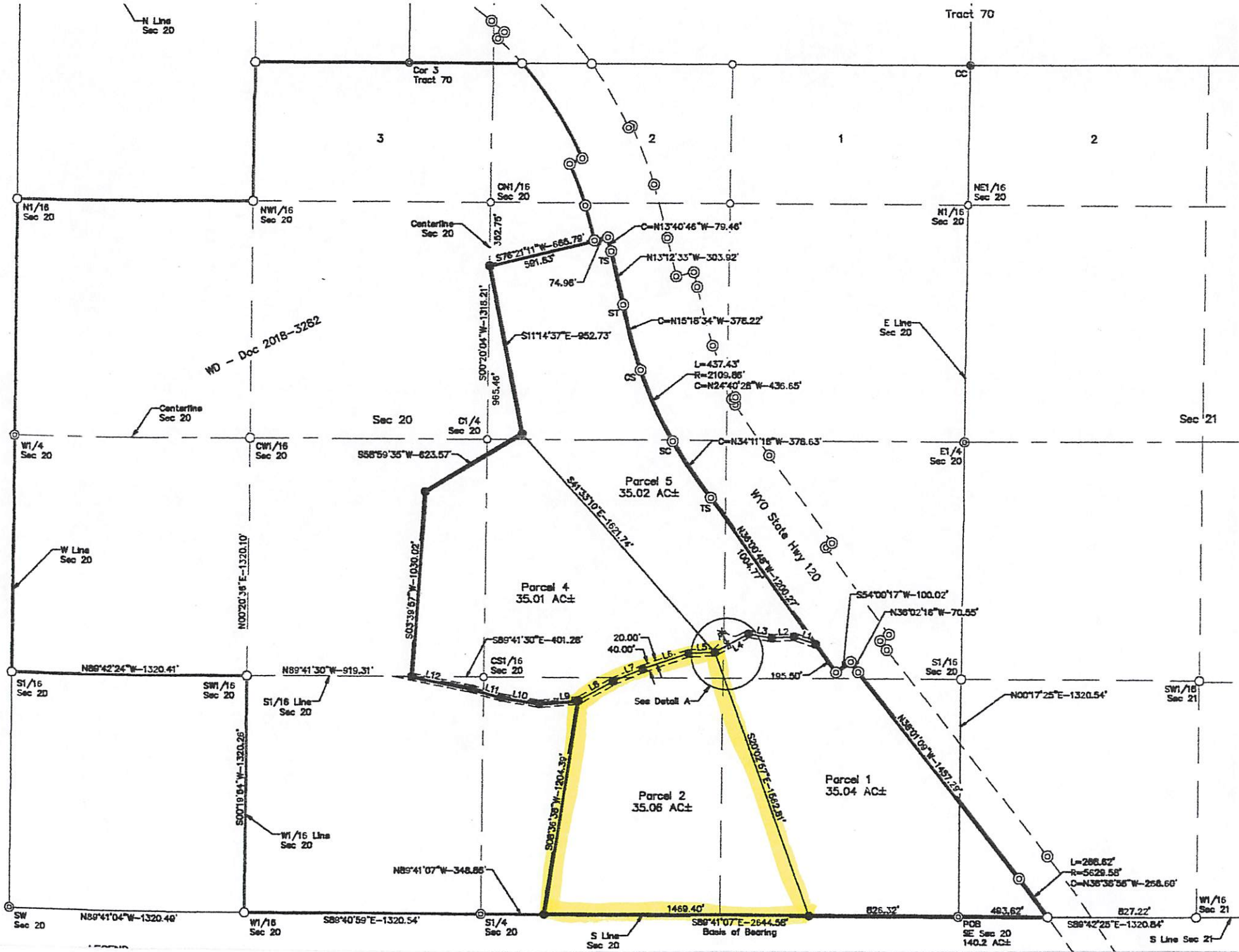


200



WYO - Doc 2018-3282

See Detail A

Parcel 2  
35.06 AC±

Parcel 4  
35.01 AC±

Parcel 5  
35.02 AC±

Parcel 1  
35.04 AC±

Basis of Bearing

POB  
SE Sec 20  
140.2 AC±

S Line  
Sec 21

E Line  
Sec 20

N Line  
Sec 20

Centerline  
Sec 20

Centerline  
Sec 20

W Line  
Sec 20

N00°20'36"E-1320.10'

S00°19'54"W-1320.26'

N89°41'07"W-348.85'

S08°36'38"W-1204.30'

S89°41'07"E-2644.58'

S1/16  
Sec 20

S1/16  
Sec 20

SW1/16  
Sec 21

W1/16  
Sec 21

E1/4  
Sec 20

C1/4  
Sec 20

W1/4  
Sec 20

CW1/16  
Sec 20

N1/16  
Sec 20

NW1/16  
Sec 20

CW1/16  
Sec 20

N1/16  
Sec 20

NE1/16  
Sec 20

Cor 3  
Tract 70

Tract 70

3

2

1

2

Sec 20

Sec 21

L10

L9

L8

L7

L6

L5

L4

L3

L2

L1

L12

L11

L10

L9

L8

L7

L6

L5

L4

L3

L2

L1

N89°41'07"W-348.85'

S08°36'38"W-1204.30'

S89°41'07"E-2644.58'

N36°02'16"W-70.55'

L=288.62'  
R=5628.58'  
C=N36°36'36"W-258.60'

S54°00'17"W-100.02'

S41°35'10"E-1621.74'

C=N34°11'18"W-378.63'

C=N24°40'28"W-436.65'

C=N15°15'34"W-378.22'

C=N13°40'46"W-79.46'

S11°14'37"E-952.73'

S76°21'41"W-666.78'

S00°20'04"W-1916.21'

392.78'

581.63'

74.98'

558°59'35"W-623.57'

S03°38'57"W-1030.02'

S89°41'30"E-401.28'

20.00'

40.00'

195.50'

N00°17'25"E-1320.54'

N89°42'24"W-1320.41'

N89°41'30"W-919.31'

N89°41'04"W-1320.40'

S88°40'59"E-1320.54'

S89°42'25"E-1320.84'

483.62'

827.22'

826.32'

195.50'

1004.17'

1004.17'

1004.17'

1004.17'

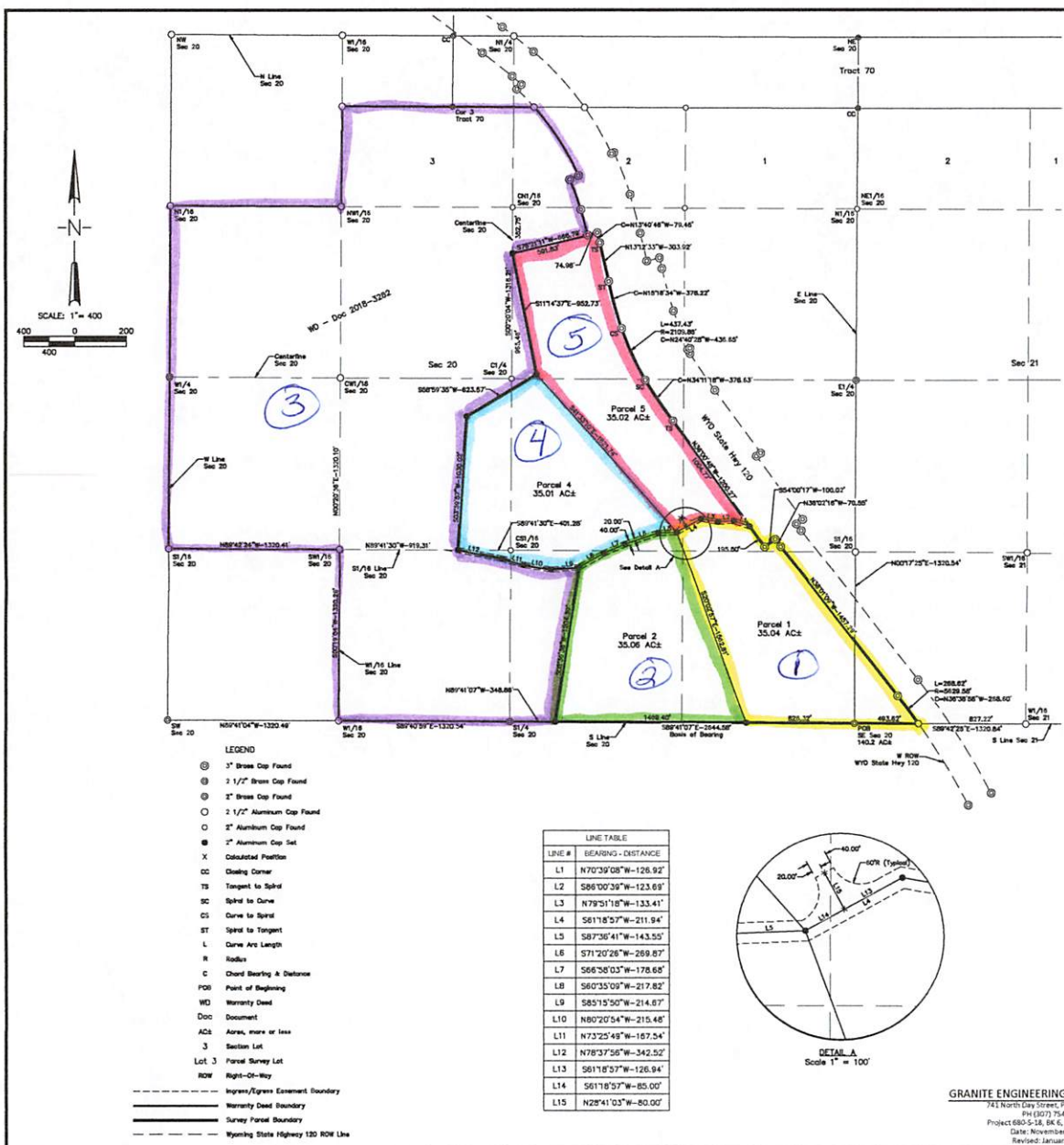
1004.17'

1004.17'

1004.17'

1004.17'

1004.17'



**LAND DESCRIPTION**

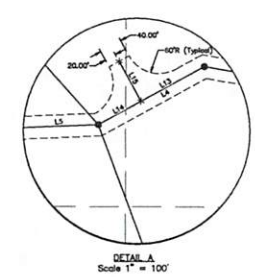
A parcel of land located in Section 20 and Section 21, T54N, R102W, 6th PM, Park County, Wyoming, and being a portion of the property described by the Warranty Deed recorded as Document 2018-2322 at the Park County Clerk and Recorder's Office in Cody, Wyoming, with said parcel of land described more particularly as follows:

**BEGINNING** at the 2 1/2 inch brass cap found at the Southwest corner of said Section 20; thence, S87°42'25"E, along the south line of said Section 21, 493.62 feet, to a 2 1/2 inch aluminum cap found at the intersection with the west right-of-way line of Wyoming State Highway 120, from which a 2 1/2 inch aluminum cap found at the W1/16 corner on south line of said Section 21 bears S87°42'25"E, along said south line, 817.22 feet; thence, along said right-of-way line along a non-tangent curve to the left, 268.62 feet, with said curve having a radius of 5623.58 feet, and a chord that bears N35°38'38"W, 268.60 feet, to a 3 inch brass cap found; thence, N36°02'16"W, along said right-of-way line, 1457.29 feet, to a 3 inch brass cap found; thence, S54°01'17"W, along said right-of-way line, 100.03 feet, to a 3 inch brass cap found; thence, N36°02'48"W, along said right-of-way line, 1200.27 feet, to a 3 inch brass cap found at Tangent to Spiral point of a spiral curve; thence, along said right-of-way line along a spiral curve to the right, with said spiral curve having a chord that bears N34°11'28"W, 378.63 feet, to a 3 inch brass cap found at the Spiral to Curve point; thence, along a non-tangent curve to the right, 473.43 feet, with said curve having a radius of 2309.86 feet and a chord that bears N24°40'29"W, 436.55 feet, to a 3 inch brass cap found at the Curve to Spiral point; thence, along said right-of-way line along a spiral curve to the right, with said spiral curve having a chord that bears N12°18'34"W, 378.22 feet, to a 3 inch brass cap found at the Spiral to Tangent point; thence, N12°23'37"W, along said right-of-way line 303.30 feet, to a 3 inch brass cap found at the Tangent to Spiral point of a spiral curve; thence, along said right-of-way line along said spiral curve to the left, with said spiral curve having a chord that bears N13°40'46"W, 79.46 feet, to a 3 inch brass cap found; thence, S76°21'11"W, along said right-of-way line, 74.95 feet, to a 3 inch brass cap found; thence, continuing S76°21'11"W, leaving said right-of-way line, 592.83 feet, to a 2 inch aluminum cap set at the intersection with the centerline of said Section 20, from which a 2 inch aluminum cap found at the C1/4 corner of said Section 20 bears S00°20'04"W, along said centerline, 965.46 feet; thence, S11°14'37"E, 952.73 feet, to a 2 inch aluminum cap set; thence, S85°05'05"W, 623.57 feet, to a 2 inch aluminum cap set; thence, S03°39'37"W, 1030.02 feet, to intersect the S1/16 line of said Section 20 at a 2 inch aluminum cap set, from which a 2 inch aluminum cap found at the C1/16 corner of said Section 20 bears S89°41'30"E, along said S1/16 line, 401.28 feet; thence, S78°17'45"E, 142.12 feet, to a 2 inch aluminum cap set; thence, S73°28'05"E, 161.54 feet, to a 2 inch aluminum cap set; thence, S87°20'54"E, 215.48 feet, to a 2 inch aluminum cap set; thence, N53°15'07"E, 214.67 feet, to a 2 inch aluminum cap set; thence, S08°58'38"W, 1204.39 feet, to a 2 inch aluminum cap set, from which a 2 1/2 inch brass cap found at the S1/4 corner of said Section 20 bears N89°41'07"W, along the south line of said Section 20, 348.36 feet; thence, S89°41'07"E, along said south line, 2355.72 feet, to said Point of Beginning of this parcel of land description, containing 340.2 acres, more or less, and subject to an ingress/egress easement over and across the described parcel of land as shown here on and being in favor of the owners of Lot 4 as shown hereon and the adjoining land owner to the west, and further subject to all other easements, rights of way and restrictions of record.

Block of Bearing being Grid North according to the Wyoming State Plane Coordinate System, West Central Zone, with a bearing of S89°41'07"E, along the south line of said Section 20, 2644.58 feet, between the 2 1/2 inch brass cap found at the S1/4 corner of said Section 20 and the 2 1/2 inch brass cap found at the Southeast corner of said Section 20.

- LEGEND**
- ⊙ 3" Brass Cap Found
  - ⊙ 2 1/2" Brass Cap Found
  - ⊙ 2" Brass Cap Found
  - ⊙ 2 1/2" Aluminum Cap Found
  - ⊙ 2" Aluminum Cap Found
  - ⊙ 2" Aluminum Cap Set
  - X Calculated Position
  - CC Closing Corner
  - Ts Tangent to Spiral
  - CS Spiral to Curve
  - CS Curve to Spiral
  - BT Spiral to Tangent
  - L Curve Arc Length
  - R Radius
  - C Chord Bearing & Distance
  - POB Point of Beginning
  - WD Warranty Deed
  - Doc Document
  - ACA Area, more or less
  - J Section Lot
  - Lot 3 Parcel Survey Lot
  - ROW Right-of-Way
  - Ingress/Egress Easement Boundary
  - Warranty Deed Boundary
  - Survey Parcel Boundary
  - Wyoming State Highway 120 ROW Line

LINE #	BEARING - DISTANCE
L1	N70°39'08"W-126.92'
L2	S86°00'30"W-123.69'
L3	N78°51'18"W-133.41'
L4	S81°18'57"W-211.94'
L5	S87°36'41"W-143.55'
L6	S71°20'28"W-289.87'
L7	S66°58'03"W-178.68'
L8	S60°35'09"W-217.82'
L9	S85°15'50"W-214.67'
L10	N80°20'54"W-215.48'
L11	N73°25'49"W-167.54'
L12	N78°37'56"W-342.52'
L13	S61°18'57"W-126.94'
L14	S61°18'57"W-85.00'
L15	N28°41'03"W-80.00'

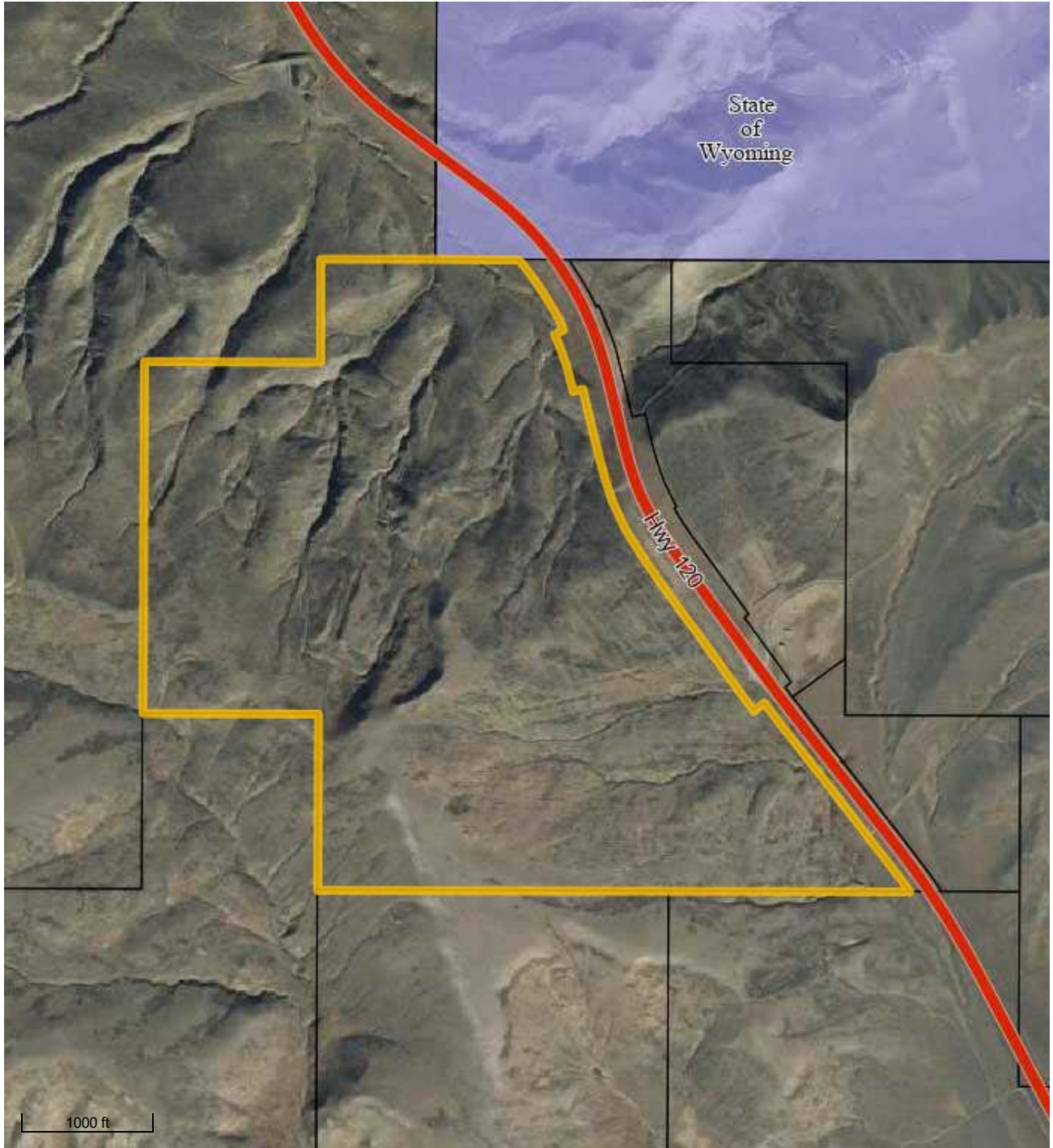


**GRANITE ENGINEERING & SURVEYING LLC**  
 741 North Elm Street, Ocean, WY 82433  
 PH (307) 754-5830  
 Project 6805-18, BK 6, PG 20, 28-29, 36  
 Date: November 12, 2018  
 Revised: January 2, 2019

PLAT OF  
**SHUMARD - SKULL CREEK PASS - RECORD OF SURVEY**  
 A Portion of Section 20 and Section 21  
 T54N, R100W, 6th PM  
 Park County, Wyoming  
 Sheet 1 of 1

FILE: P:\PROJECTS\6805-18\BK 6\ASST\GSDRAW\Survey\6805181111.rwp (2018.10.02)

# Park County Wyoming MapServer



# Park County Wyoming MapServer

