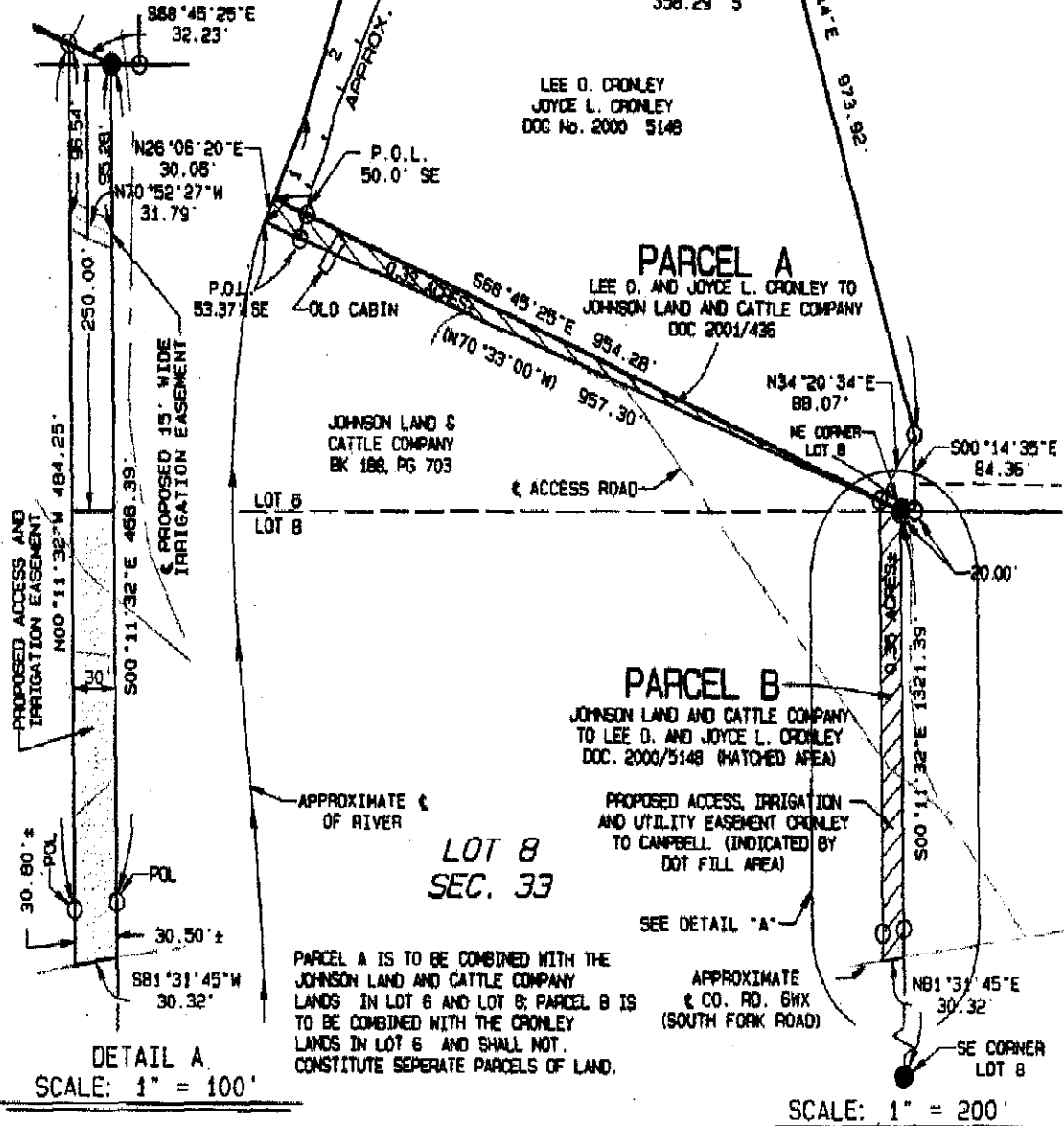


# T.50 N., R.105 W.

PROXIMATE THREAD OF THE SOUTH FORK OF THE  
JOSHONE RIVER SURVEYED AUGUST 1 & 2, 2000  
(RIVER BOUNDARY SUBJECT TO CHANGE  
WITH THE NATURAL MOVEMENT OF THE RIVER)

COURSES OF THREAD OF  
STREAM RIVER BOUNDARY  
(AS OF AUGUST 2, 2000)

LINE	BEARING	DISTANCE
1	N26°06'20"E	134.89'
2	N20°51'01"E	157.95'
3	N31°42'40"E	134.69'
4	N43°51'20"E	173.39'
5	N54°00'01"E	150.63'
6	N63°58'13"E	261.39'



DETAIL A  
SCALE: 1" = 100'

SCALE: 1" = 200'

### LEGEND

- INDICATES REBAR WITH 2" ALUM. CAP SET ○
- INDICATES BRASS CAP FOUND ●
- INDICATES 3/4" IRON PIPE FOUND ●
- RECORD DIMENSIONS SHOWN THUS ( )

NOTE:  
THIS GRADING IS NOT INTENDED TO SHOW ALL RIGHTS OF WAY, EASEMENTS,  
PUBLIC OR PRIVATE UTILITIES, IRRIGATION FACILITIES, OTHER IMPROVEMENTS  
OR FLOOD PLAIN AREAS UPON THE PARCEL OR PARCELS DELINEATED HEREON.  
THIS SURVEYOR DID NOT CONDUCT A COMPLETE TITLE SEARCH, ABSTRACT STUDY  
OR HAZARD INQUIRY FOR THE LANDS SHOWN HEREON.

### CERTIFICATE OF SURVEYOR

STATE OF WYOMING )  
COUNTY OF PARK ) SS  
I, PAUL A. BLOUGH ON BEHALF OF HOLM, BLOUGH AND COMPANY OF COOY, WYOMING  
DO HEREBY CERTIFY THAT THIS MAP WAS PREPARED FROM FIELD NOTES TAKEN  
DURING AN ACTUAL SURVEY MADE UNDER MY DIRECTION ON DECEMBER 14, 2000  
THAT THIS MAP CORRECTLY SHOWS THE RESULTS OF SAID SURVEY AND THAT THE  
MONUMENTS FOUND OR SET ARE AS SHOWN TO THE BEST OF MY KNOWLEDGE AND  
BELIEF.

WYOMING L.S. REGISTRATION NO. 2332

HOLM, BLOUGH AND COMPANY  
BY: PAUL A. BLOUGH (AGENT)

JOHNSON LAND & CATTLE COMPANY  
3129 SOUTH FORK HIGHWAY  
COOY, WYOMING 82414

RECORD OF SURVEY SHOWING  
**BOUNDARY LINE ADJUSTMENT  
BETWEEN JOHNSON LAND AND  
CATTLE CO. AND LEE CROWLEY**  
IN LOTS 6 & 8, SECTION 33  
T.50 N., R.105 W. 6th. P.M.  
PARK COUNTY, WYOMING



HOLM, BLOUGH AND COMPANY  
Consulting Engineers & Land Surveyors  
1241 Sheridan Ave.  
P.O. Box 1748  
Cody, Wyoming 82414

1. DECEMBER, 2000
2. REVISED 1/16/01 TO CORRECT DOCUMENT # OF CROWLEY DEED
3. REVISED 5/10/01 TO SHOW EASEMENT FROM CROWLEY TO CAMPBELL (DOT FILL AREA)

BOOK 401  
JOB 2000-234.P80