

CANYON REAL ESTATE, LLC

1128 12TH STREET

CODY, WY 82414

307-527-7092

SUNLIGHT BASIN



TACK
SHED &
CORRAL

\$549,900



GARAGE/CARPORT

THIS CABIN IS SITUATED ON 4.92 ACRES IN THE HIGHLY SOUGHT AFTER SUNLIGHT BASIN AREA. SHELTERED BY MATURE TREES TO THE WEST AND MAGNIFICENT MOUNTAIN VIEWS TO THE EAST, THIS PROPERTY FEATURES A 3 BEDROOM CABIN, GARAGE, RUSTIC TACK SHED, HAY SHED AND CORRAL. NEXT TO THE NATIONAL FOREST, THERE ARE ENDLESS TRAILS FOR RIDING AND HIKING IN THE HEART OF THE ABSAROKA MOUNTAINS. A MOUNTAIN SPRING FURNISHES THE DOMESTIC WATER AND PROVIDES FOR A YEAR ROUND STREAM FOR LIVESTOCK.





Open Floor
Plan

Kitchen
Eating
Area



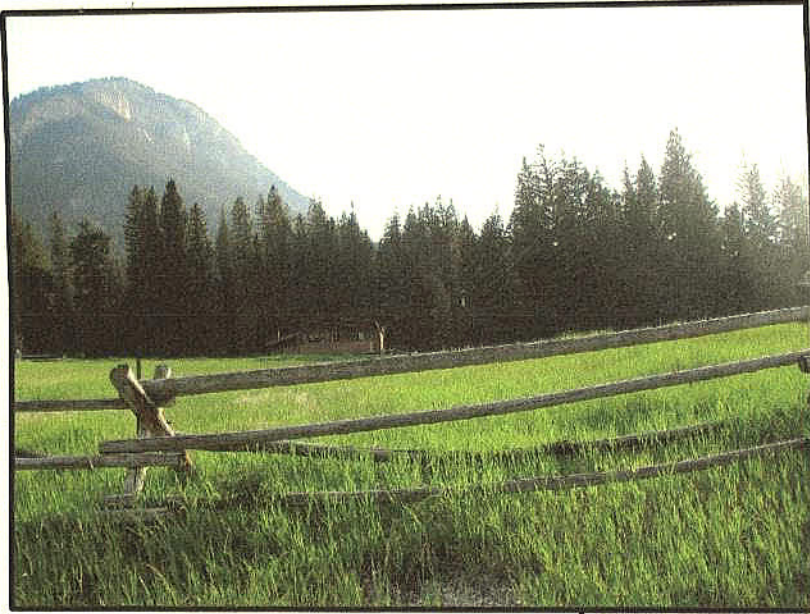
High Windows
Plenty of
Natural
Light

High
Ceilings
For Mounts

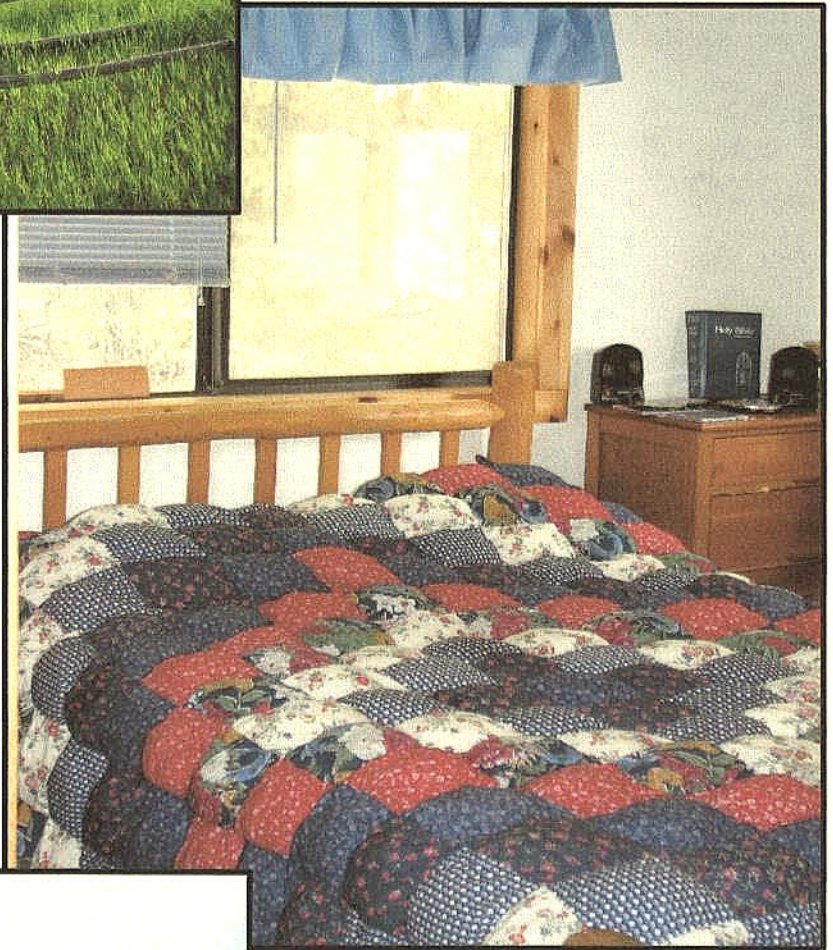


Heating
Stove

Additional
Outside
View



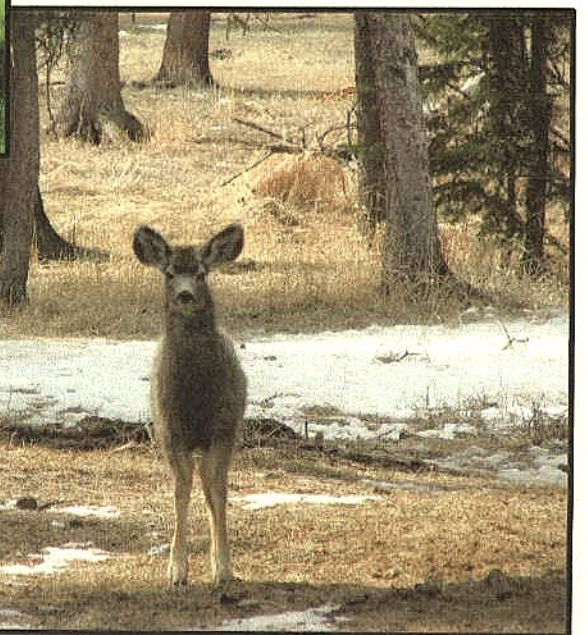
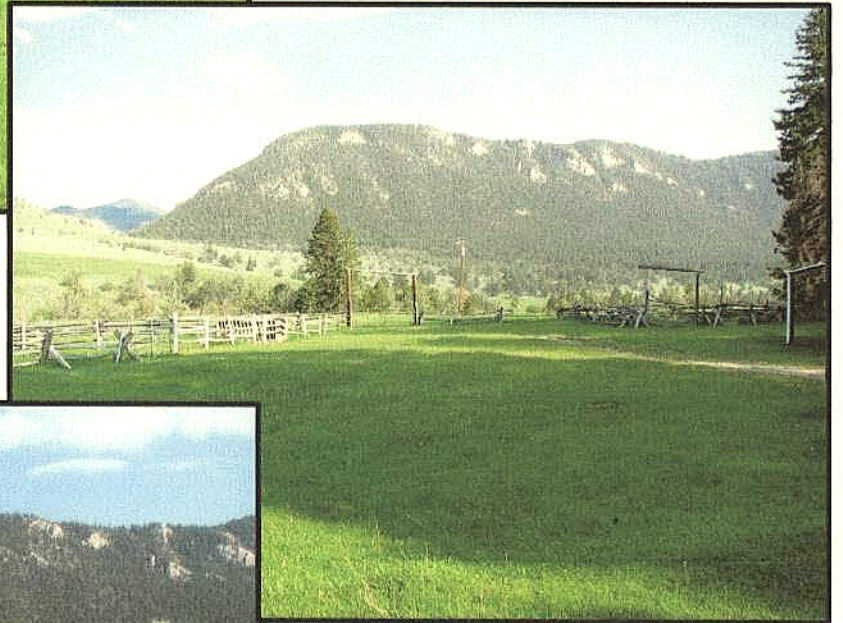
One of Three
Bedrooms



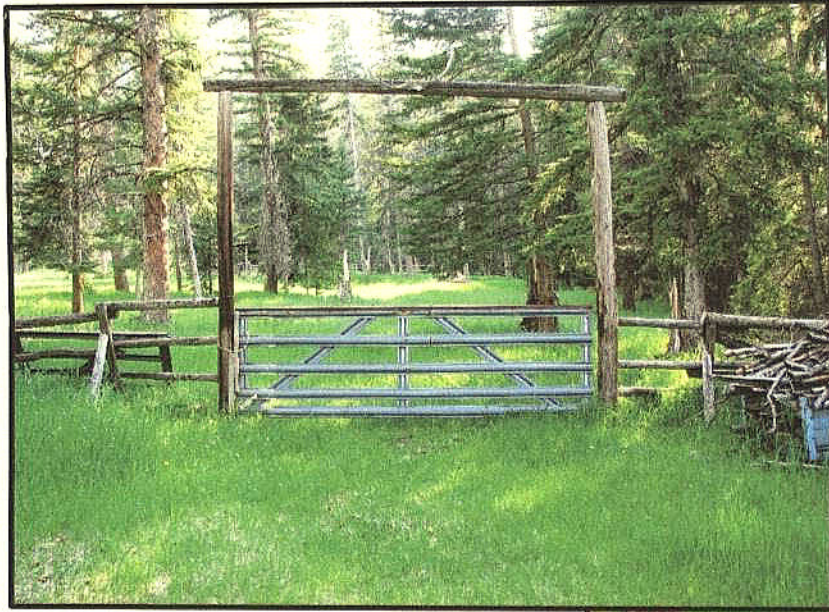
Sheltered
By
Trees



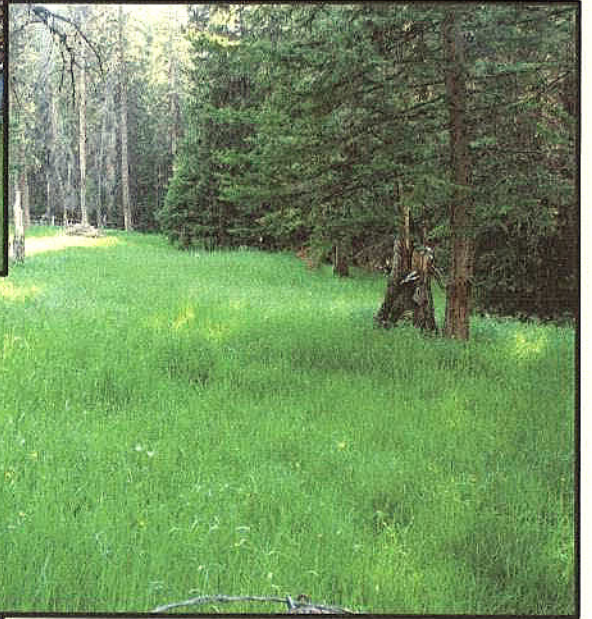
Open Space



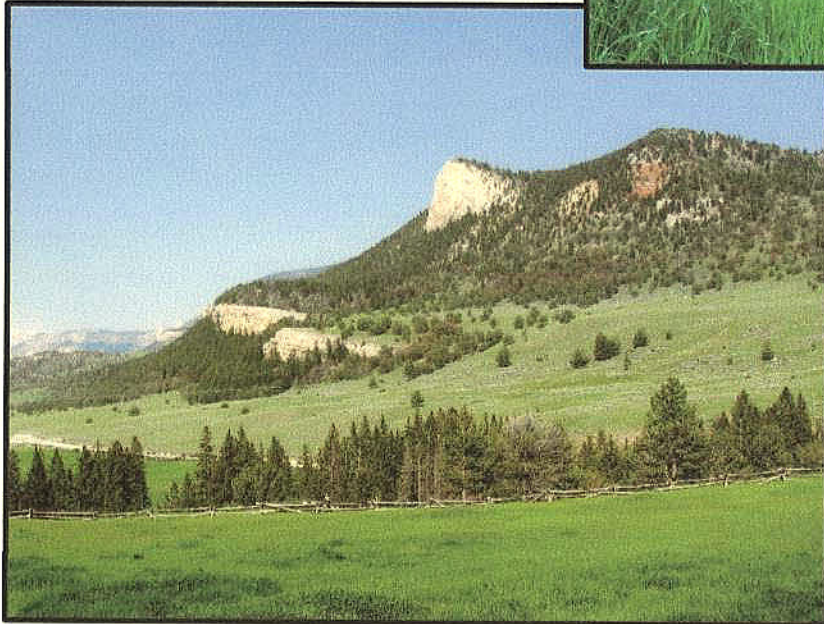
The Neighbor



ADDITIONAL



MOUNTAIN



VIEWS



COME
AND
PLAY

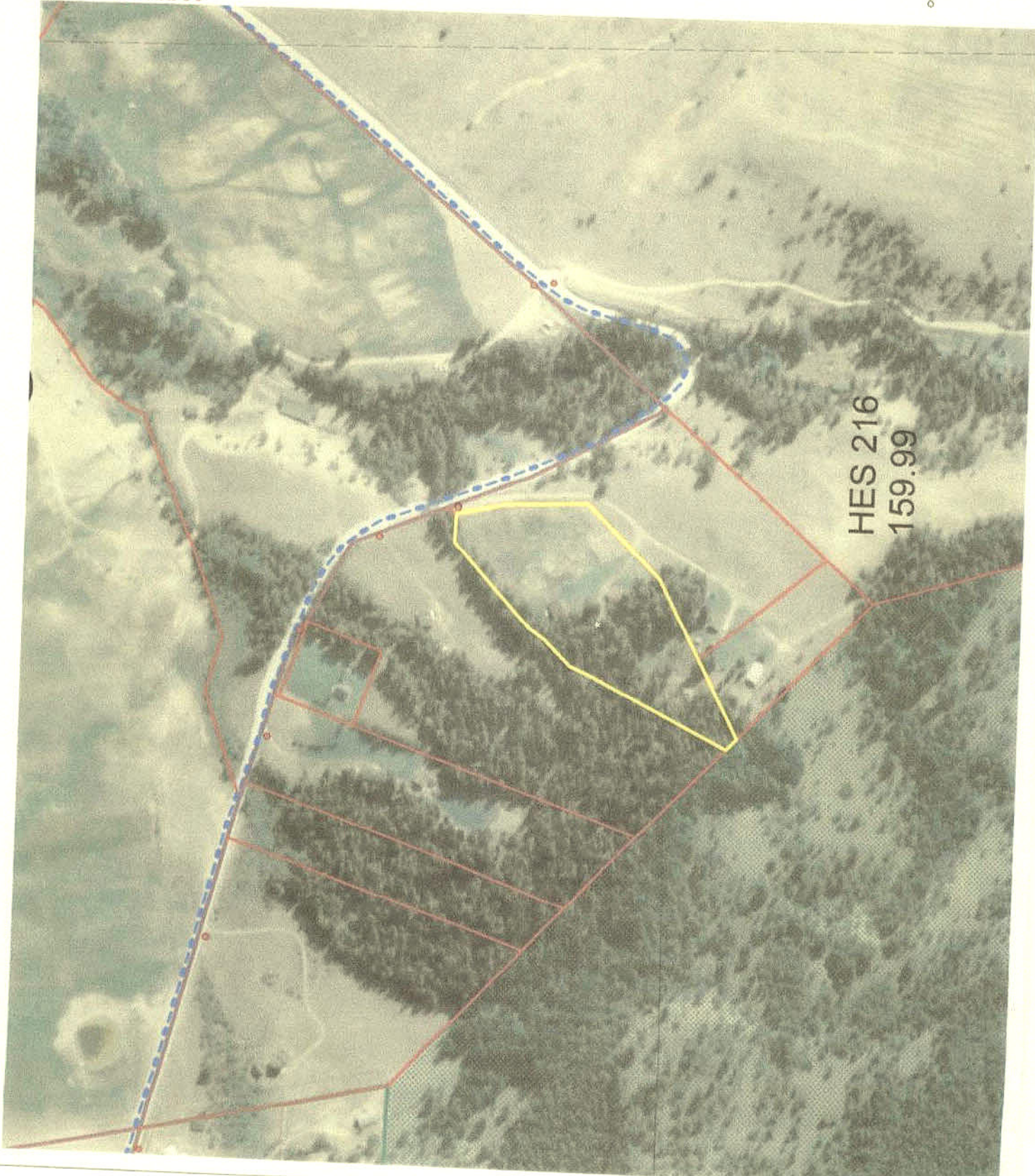
**THIS MAP IS FOR
REFERENCE USE
ONLY**

This map is for reference purposes only. The location and extent of roads, access, and property lines depicted herein do not guarantee legal rights of passage, ingress and egress, or property boundaries.



**PARK COUNTY
ASSESSOR
DEPARTMENT**

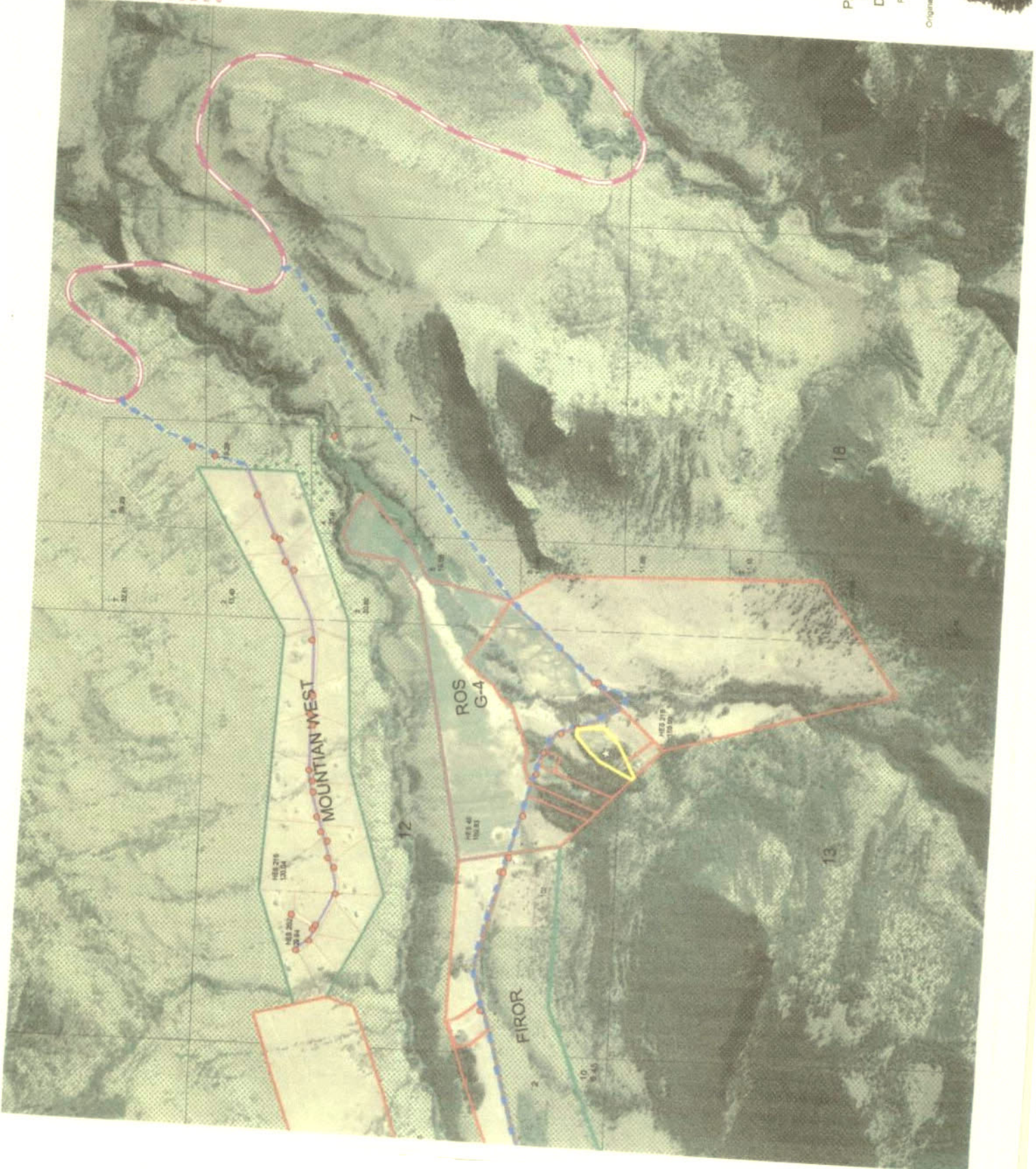
Park County, Wyoming
Organized 1911
Original Park County Courthouse
Completed 1912



**HES 216
159.99**

**THIS MAP IS FOR
REFERENCE USE
ONLY**

This map is for reference purposes only. The location and extent of roads, accesses, and property lines depicted herein do not guarantee legal rights of passage, ingress and egress, or property boundaries.



PARK COUNTY
ASSESSOR
DEPARTMENT

Park County, Wyoming
Organized 1911
Original Park County Courthouse
Completed 1912

