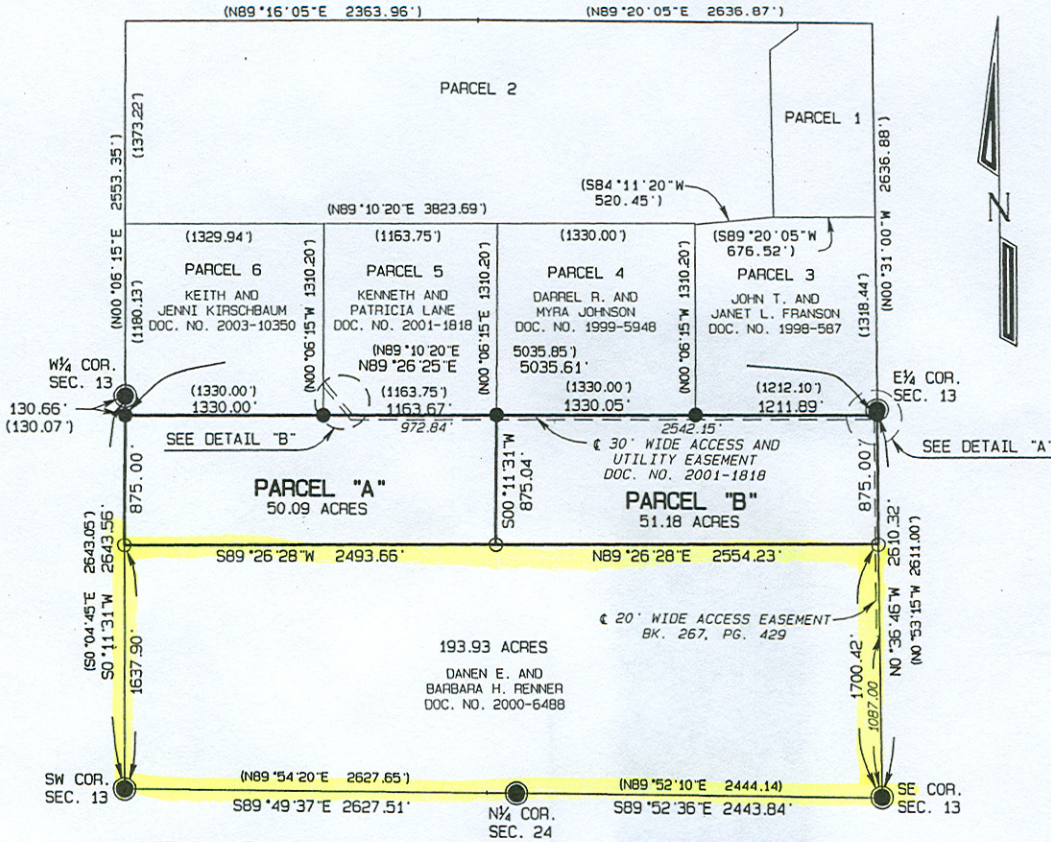


T.57 N., R.103 W.
(ORIGINAL SURVEY)

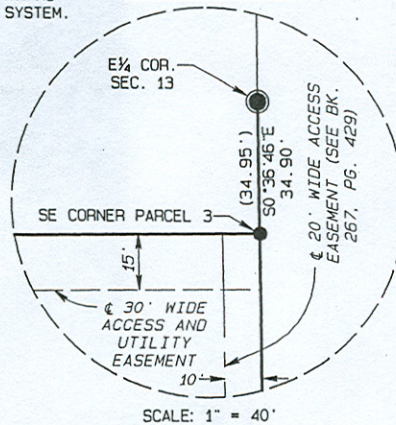


DETAIL "B"

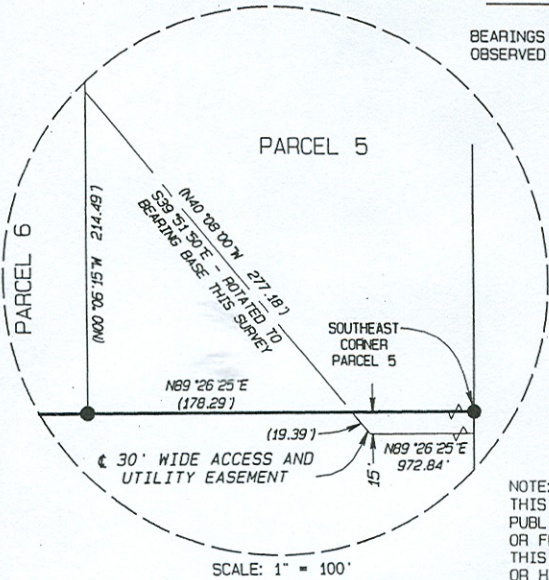
SCALE: 1" = 1000'

BEARINGS ARE BASED ON TRUE NORTH AS OBSERVED BY GLOBAL POSITIONING SYSTEM.

DETAIL "A"



SCALE: 1" = 40'



SCALE: 1" = 100'

NOTE:

THIS DRAWING IS NOT INTENDED TO SHOW ALL RIGHTS OF WAY, EASEMENTS, PUBLIC OR PRIVATE UTILITIES, IRRIGATION FACILITIES, OTHER IMPROVEMENTS OR FLOOD PLAIN AREAS UPON THE PARCEL OR PARCELS DELINEATED HEREON. THIS SURVEYOR DID NOT CONDUCT A COMPLETE TITLE SEARCH, ABSTRACT STUDY OR HAZARD INQUIRY FOR THE LANDS SHOWN HEREON.

LEGEND

- 5/8" REBAR WITH 2" ALUM. CAP SET ○
- REBAR WITH ALUM. CAP FOUND ●
- BRASS CAP FOUND ⊙
- RECORD DIMENSIONS SHOWN THUS ()

DAN RENNER
POWELL, WYOMING
RECORD OF SURVEY SHOWING
PARCELS OF LAND
IN
SECTION 13, T.57 N., R.103 W.
PARK COUNTY, WYOMING

CERTIFICATE OF SURVEYOR

STATE OF WYOMING)
COUNTY OF PARK) SS
I, J. HARVEY COPELAND ON BEHALF OF HOLM, BLOUGH AND COMPANY OF CODY, WYOMING DO HEREBY CERTIFY THAT THIS MAP WAS PREPARED FROM FIELD NOTES TAKEN DURING AN ACTUAL SURVEY MADE UNDER MY DIRECTION ON MARCH 27, 2006, THAT THIS MAP CORRECTLY SHOWS THE RESULTS OF SAID SURVEY AND THAT THE MONUMENTS FOUND OR SET ARE AS SHOWN TO THE BEST OF MY KNOWLEDGE AND BELIEF.

HOLM, BLOUGH AND COMPANY
BY: J. HARVEY COPELAND (AGENT)
WYOMING L.S. REGISTRATION NO. 2451



HB HOLM, BLOUGH AND COMPANY
Consulting Engineers & Land Surveyors
1402 Stampede Ave.
Cody, Wyoming 82414

JULY, 2006

BOOK 457
S:\JOBS\2006\06-093\06-093.pro